



# KONDA

A Screenplay  
By  
Robert C. Powers

A NEW SUPER-  
HERO!!

Much  
more than  
your usual  
werewolf  
story!



## Executive Summary

- **TITLE:** KONDA
- **LENGTH:** Feature film
- **GENRE:** Adventure/Horror
- **BUDGET:** Less than \$3 M
- **SHOOT:** Ready for shooting
- **CHARACTERS** (4 Main, 4 Supporting, 4 Minor)

- Beau (29)
- Tua (25)
- Man (45)
- Woodi (22)
- Matt (27)
- Mary Liz (25)
- Maker (60)
- Jesse (32)
- Noah (58)
- Aaron (27)
- Henry (55)
- Kitchi—Ka (40)

### **LOCATIONS** (6)

- Camp
- Forest
- Old House
- Lodge
- Cave
- Country Store

### **Logline**

An American Indian, returns to his heritage, faces the Great Demon and his Werewolves to save his tribe.

### **Coverage**

With its twist on the werewolf genre combined with Native American mythology, KONDA IS a thriller supernatural horror adventure. The premise has a lot of potential for tension and suspense, and the characters are engaging.



Beau



Tua

Tua

BEAU HUNTER, half Chicawa Native American, is haunted by a raid as a Navy SEAL in which he killed a terrorist and his Woman.

He leaves the Navy and goes, with his friend, TUA, also an ex-Navy SEAL and a Native Hawaiian, to a campground, Camp Chicawa, for young adults.

Camp Chicawa is run by Beau's Tribe, the Chicawa.

Years ago, Beau and his father were expelled from the Chicawa Tribe because he had a white mother. He seeks to redeem his and his father's honor.





**Man**

**CAMP MASTER MAN LAND**, known as Chief Chicawa-Ca of the Chicawa, tells the **CAMPERS** that they must cherish and develop their honor.

He tells the tale of the Brave Konda who, years ago, challenged the Great Demon **BEEZLEBAT** and drove off the Werewolves.

**WOODI LAND**, Camp Master's daughter, Beau's childhood girlfriend, gives Beau a luke - warm welcome.

She's still mad that he left to join the Navy, and has a new boy friend.

Beau seeks to win her.

**Woodi**





**Matt**

**MATT HUNTER**, Beau's brother who stayed with the Tribe, is a wild and sometimes undependable young man, much different from his brother.

Matt is having an affair with a girl of questionable reputation, Mary Liz.



**Mary Liz**





**Initiation Campfire**



**Maker**



**House of Beezlebat**

Beau participates in the camp initiation ceremony as the legendary **CHICAWA BRAVE KONDA**.

Camp Master Man Land, plays Chief Chicawa-Ca, introduces **CHIEF MAKER, CURRENT CHIEF OF THE CHICAWA**.

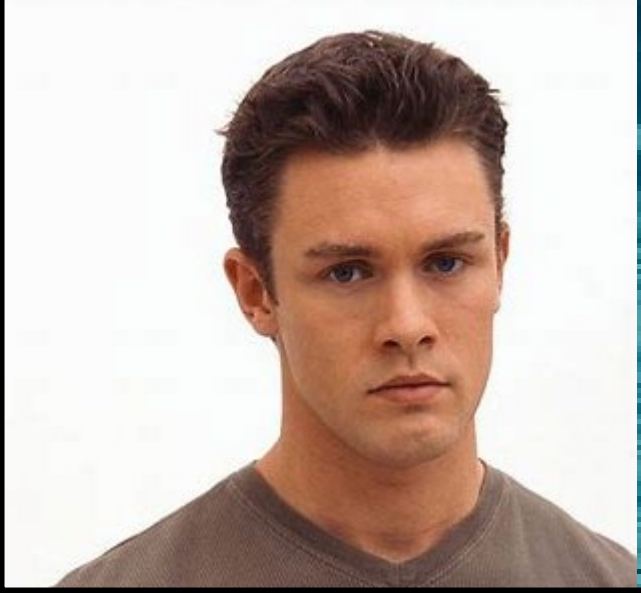
Chicawa-Ca tells the **CAMPERS** that they must cherish and develop honor as did Konda in his legendary battle with the Great Demon, **Beezlebat**.

Beau leads the Campers to initiation in the **Haunted House of Beezlebat**.

Beau finds his brother, Matt in an old ice cellar, hairy and disfigured.

Matt, scared and confused, bites **BEAU** and runs.

**Aaron**



**CHIEF COUNSELOR AARON BETTER** tells Beau that Matt is missing.

Aaron, arrogant and tough, confronts Beau and claims Woodi as “his girl”.

They begin a search for Matt aided by the Mayor, Henry.

Beau has cramps and horrible dreams.

**Henry**





**Jesse**



**Noah**

A great draught has hit Chicawa County and its inhabitants are beginning to feel the effects.

The new Preacher in Town , JESSE, asks Man to sell him Camp Chicawa as part of his plan to expand his church, Triumph Church.

Jesse has just bought NOAH'S farm.

He's building apartments there for all of his members.

He promises that all members will be cared for, free of charge, because the "Mean World" owes them a living.

Man refuses.





Lake

Beau seeks help from his friend Lake, a full blooded Chicawa.

And from Bedford, the Sheriff.

Beau doesn't understand what's happening to him .

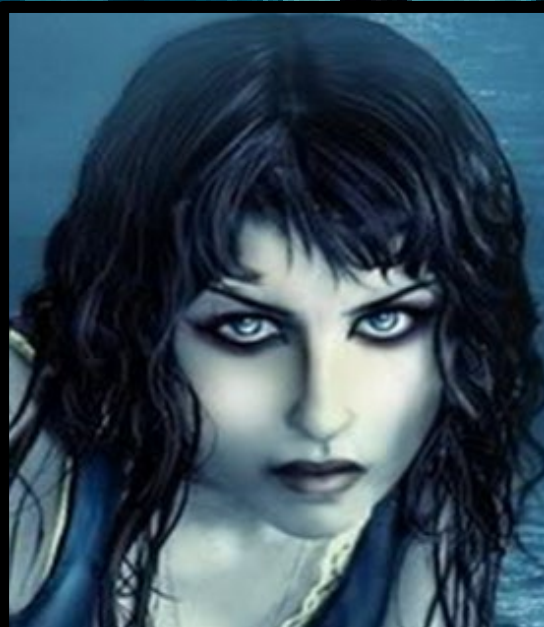
Matt's bite slowly transforms him into a Werewolf.

Bedford





**Horace**



**Maggie**

Beau and Tua go to Disbat House, home of Horace and his daughter Mary Liz, the girl with whom Matt was having an affair.

They question Horace and Mary Liz about Matt, to no avail.

Mary Liz, a sultry seductress, hits on Beau. He resists but feels strangely attracted to her.

Horace's wife Maggie, a demented and spooky young woman chases them away.

**Werewolf Matt**



**Lake Chicawa  
Hideaway**

Beau , alone in the forest, hears chirping sounds and the beat of giant wings.

He runs to Wolf Mountain at speeds unknown to him.

There he encounters Matt hiding in a cave, a disfigured Werewolf.

Matt tells Beau that he, Beau, is a Werewolf and must go to Triumph Farm.

Woodi lures Beau to an old childhood hideaway by Lake Chicawa.

Kisses him, bites him; says her bite will protect him.



**Disbat House**



**Mysterious  
Werewolf**



**Horace, Maggie and Mary Liz move to  
Triumph Farm.**

**Beau goes to deserted Disbat House  
searching for Matt.**

**Beau finds Mat's head in the old house.**

**He sees a hairy creature jump out the  
window.**

**He smells smoke – the house is on fire. He  
jumps out the window.**

**He's chased by a mysterious Werewolf  
creature.**

**Black wolf**



**Woodi -  
Warawolf**



**Beau runs from the Mysterious Werewolf.**

**As he runs, he is transformed into a giant satin black wolf.**

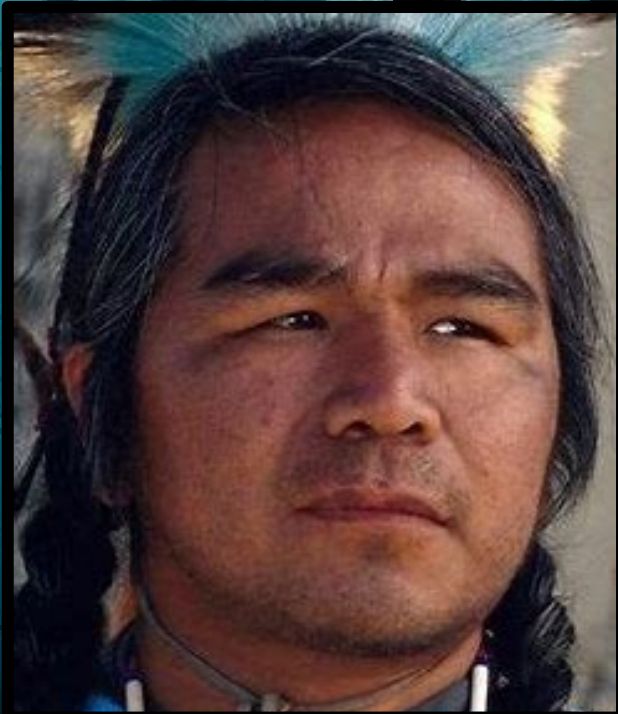
**He encounters another wolf; it's Woodi!**

**They turn on the Mysterious Werewolf, snarl and snap.**

**The Mysterious Werewolf runs away.**



Cave of  
Konda



Kitchi-Ca

Woo*di* takes Beau to the Cave of Konda.

KITCHI-CA, INDIAN MEDICINE MAN, comes to Beau in the Cave of Konda.

Kitchi-Ka explains that Woo*di*'s bite has made Beau a Wara; a super wolf created by the Great Spirit to fight evil.

Beau must learn the ways of the Wara and successfully transform into a Great Warawolf.

If Beau cannot successfully transform to Warawolf, he will become a Werewolf.

Beau's transformation is a success.

Beau is accepted by CHICAWA-CA (Man), leader of the Wara, into the family of Wara.





**Werewolf**



**Beezlebat**



**Warawolf Konda**

Beau discovers that Woodi is missing.

Man tells him that the Great Demon has placed the Curse of the Were on Camp Chicawa and that the Great Spirit has sent Beau to help fight the new evil.

Beau must solve the murders, fight Werewolves and Demons, find his missing lady, win the love of Woodi.

The identity of Beezlebat is revealed.  
**WHO IS THE GREAT DEMON BEEZLEBAT?**

In an action packed finale, Beau and Woodi battle Beezlebat.

Beau must make an agonizing decision; remain with the Wara and Woodi or reject the Wara and his love to return to the life he had known.

**Penned by optioned screenwriter Robert C. Powers, KONDA is story that comes along every generation or so – so unique it defines a new genre – Adventure Horror.**



**ROBERT C. POWERS**

- Twists
- Werewolves
- Native American mythology
- Thriller
- Supernatural horror adventure
- Tension and suspense
- Engaging characters.

**May we send the script?**

**We look forward to  
working with you.**

**Babz Bitela, Silver Bitela  
Agency**

**916 412 1387**

**[bbmovieagent@gmail.com](mailto:bbmovieagent@gmail.com)**

**Robert Powers, Writer**

**757 621 6846**

**[robertcpowers@cox.net](mailto:robertcpowers@cox.net)**