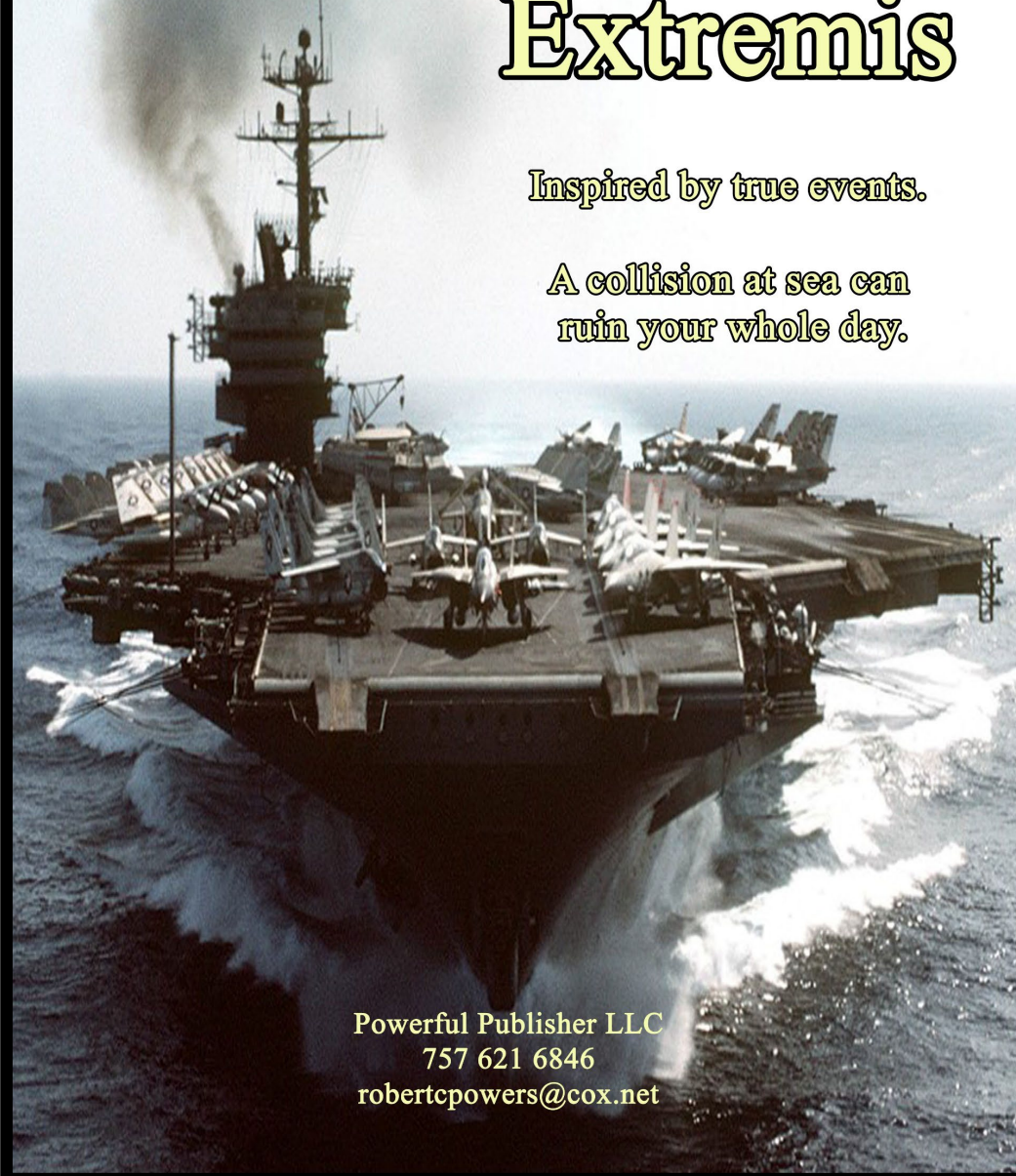


A Screenplay by
Robert C. Powers

Extremis

Inspired by true events.

A collision at sea can
ruin your whole day.



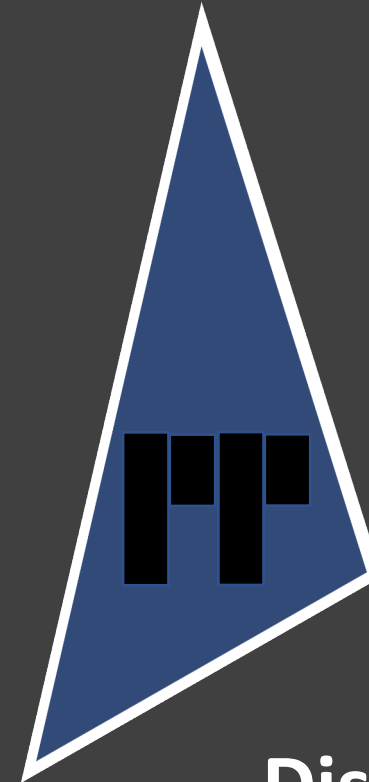
Powerful Publisher LLC
757 621 6846
robertcpowers@cox.net

A Screenplay
By
Robert C. Powers

Based on real
events.

Names have been
changed.

Some fictitious
characters and
events added to
enhance the
drama.



Disaster at Sea!

Executive Summary

- **TITLE:** EXTREMIS
- **LENGTH:** Feature film
- **GENRE:** Action/Adventure
- **BUDGET:** Less than \$8 M
- **SHOOT:** Ready for shooting
- **CHARACTERS** (4 Main, 11 Supporting, 23 Minor)
 - Brad (35)
 - Pete (32)
 - Samantha (29)
 - Commodore (47)
 - Captain Shaw (46)
 - Captain Gurry (48)
 - MCPO Lynn (44)
 - Seth (28)
 - Willy (27)
 - Brody (29)
 - Glen (26)
 - Truck (25)
 - McClaran (30)
 - Fubar (24)
 - Ed (41)
 - Keith (25)

Logline

A young destroyer captain must prove himself to his crew when he hazards his ship to rescue a fiercely burning cruiser and its men after a horrendous collision with an aircraft carrier.

Coverage

An extremely well-researched and authentic, action filled script.

The action prose is tense and well-composed, lending the appropriate sense of urgency and danger to the rescue at sea.

LOCATIONS (6)

- Destroyer
- Cruiser
- Aircraft carrier
- Airplane
- Washington Office
- Hearing Room



Commander Brad Perry
Commanding Officer (Captain) USS POWER



Samantha (Sam)

Commander Brad Perry is an up-and-coming young officer, dedicated and serious about a naval career, following the footsteps of his father. He has served with a powerful admiral and is selected for early command.

He meets the beautiful Samantha and falls in love. She wants him to leave the Navy, “make it big” in business.

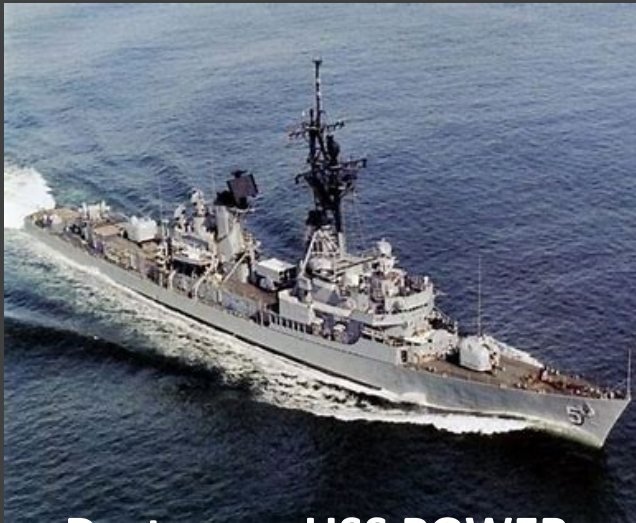
He makes a hard choice, takes command of the destroyer USS POWER.

The crew questions whether “Brad the Kid” is up to being Captain.

Senior officers are disturbed at the precedent set by assigning younger officers to command.



**Captain Mark Schuler,
Squadron Commander (Commodore)**



Destroyer, USS POWER

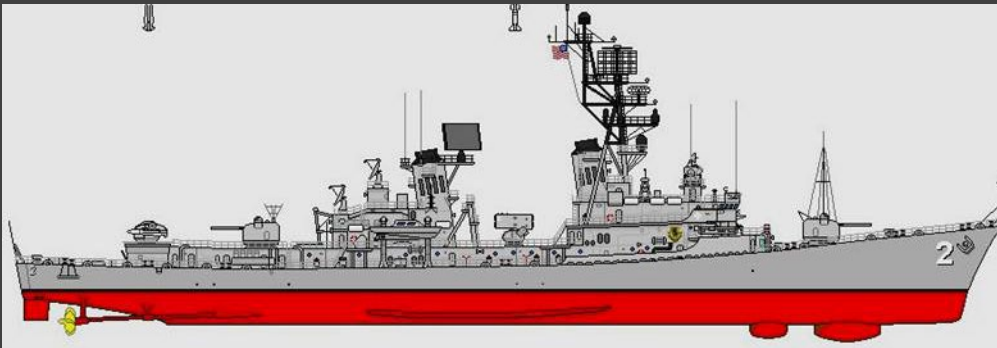
**Soon after Brad takes command, his ship
operates in the Sicilian Sea in naval war
games.**

**Brad's boss, Commodore Mark Schuler,
Destroyer Squadron Commander, a cautious
man, is embarked aboard POWER.**

**Mark is not sure of Brad's capabilities, but
has an open mind.**



Commander Ed Steinholder



Ship plans

Brad's adversary from an earlier assignment, Commander Ed Steinholder is aboard as an exercise observer. He's a "mustang", once enlisted, up through the ranks to Commander.

Ed is a technical expert on Navy ship plans and construction.

He resents Brad's early selection to command, looks for opportunity to discredit him.



Cruiser, USS SAMAR



**Captain Wally Shaw,
Commanding Officer (Captain), USS SAMAR**

**USS POWER operates with the Cruiser USS
SAMAR and other ships in the
Mediterranean Sea.**

**Captain Wally Shaw of SAMAR, a very senior
officer, a past acquaintance of Brad, is not
sure Brad is ready for command.**



USS JEFFERSON



**Captain Buck Gurry
Commanding Officer, (Captain) JEFFERSON**

The aircraft carrier USS JEFFERSON operates with the group.

Captain Buck Gurry, a naval aviator, is the Commanding Officer. He's a back slapping, navy politician.

Buck has been selected for promotion to Rear Admiral and is awaiting relief as Captain of JEFFERSON.



**Lieutenant Commander Pete Castle,
Executive Officer, USS POWER**



Petty Officer Second Class Russel McClaran

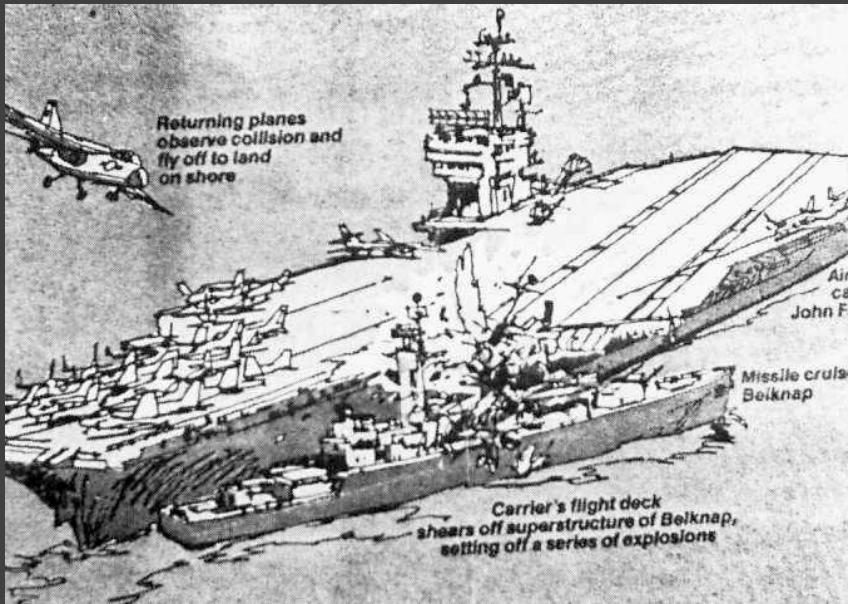
Pete is Brad's Executive Officer, a capable officer who aspires to command.

Petty Officer McClaran is a highly respected new man who received an award in his last command for saving a life in a ship fire.

McClaran is known to be dynamic and often acts on his own, a trait both admirable but sometimes dangerous.



**Lieutenant Junior Grade Keith Knotts
Officer of the Deck (OOD) USS SAMAR**



The Collision

The Commodore assigns SAMAR as plane guard for JEFFERSON, a position close to the carrier's stern, ready to rescue any aircraft crew that may go into the water.

Captain Shaw considers Keith to be his "best OOD". During plane guard operations, he remains in the wardroom to watch his favorite western movie.

Through a series of errors by SAMAR'S OOD, the cruiser USS SAMAR maneuvers to become "in extremis (collision unavoidable)" with the aircraft carrier USS JEFFERSON,

Captain Shaw is called to the bridge – too late.

They collide.



**USS POWER heads for the
burning and exploding USS
SAMAR at flank speed**

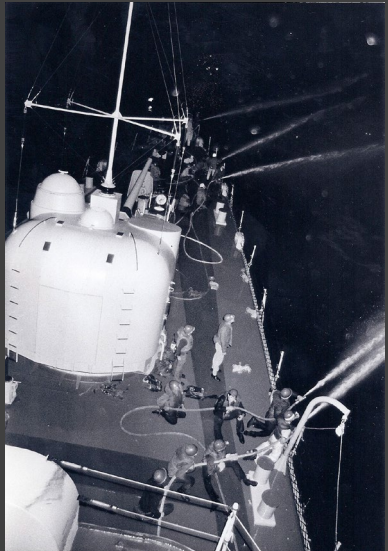
Through a series of errors, the cruiser USS SAMAR maneuvers to become “in extremis (collision unavoidable)” with the aircraft carrier USS JEFFERSON, and they collide.

Stakes are high as SAMAR burns, in danger of sinking; fires threaten a magazine that contains “boomers” which could produce a massive radioactive explosion.

Brad charges in with his ship to assist SAMAR.

The Commodore warns him “do not hazard your ship.”

He presses on, goes alongside SAMAR to bring fire hoses to bear in spite of the danger.



Crew of POWER fights fires aboard SAMAR

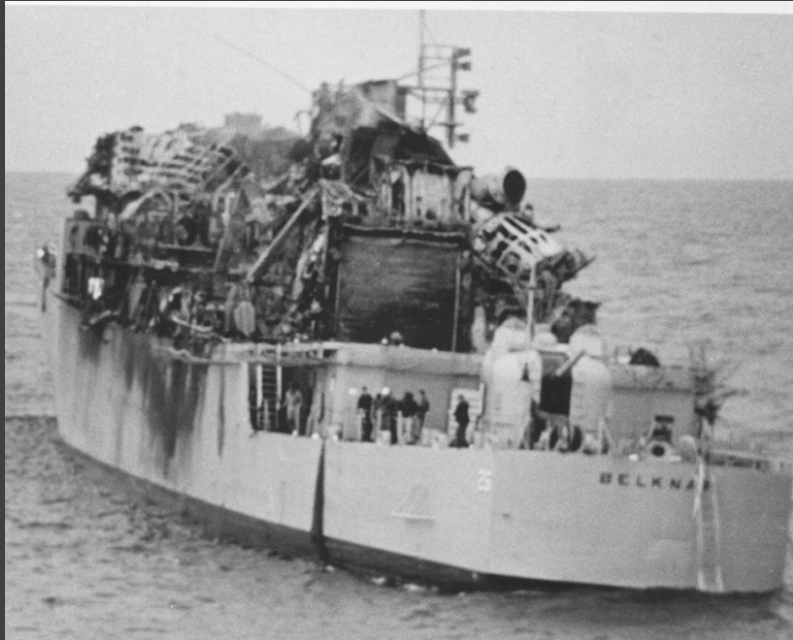


Brad handles his ship close in to raging fires and exploding shrapnel on SAMAR.

Pete organizes the damage control assistance and firefighting teams. He's everywhere on deck, issuing orders and eventually controlling fires on SAMAR.

McClaran sees the leader of damage control on SAMAR suffer a heart attack, leaps aboard the cruiser and prevents the fires from reaching the "boomer" magazine --- all on his own, without orders.

Brad's crew is inspired by his leadership and SAMAR is saved, but POWER receives damage.



USS SAMAR, morning after the collision



**USS POWER damage from
being alongside SAMAR**

**Damage to POWER received while
alongside SMA is serious but not critical to
her continuing operation. The damage
resulted primarily from “banging” together
of the two ships while moored together.**



Hearing on SAMAR – JEFFERSON Collision

A hearing is called. There's a face-saving plot among senior officers to protect the Captain of the carrier and place blame for the collision on the officers of SAMAR and Commodore Schuler.

They also seek to divert attention from damage to the carrier by blaming Brad for disobeying the order to "not hazard his ship".

They find a willing ally in Ed who seeks to blame Brad for damaging his ship in direct disobedience to a lawful order.



Naples, Italy.

SAMAR towed to the harbor.

**Hearing held aboard
JEFFERSON at anchor.**

Samantha arrives in Naples; tells Brad “Time to leave”; they’re “out to get you.”

Brad has another hard choice and false accusations to overcome.

A dramatic finale; searing courtroom drama with flashbacks to the events leading up to the collision and the horrendous event itself.

Coverage Notes

**Penned by optioned screenwriter Robert C. Powers
(who lived the true story), EXTREMIS beats a
breakneck pace; based on the book “Save the
Belknap” which tells the true story. It is a story of
leadership, love and hard choices.**

**This screenplay is in the Quarterfinalist round of the
ScreenCraft True Story & Public Domain
Competition)**



ROBERT C. POWERS

- **Well-researched .**
- **Authentic, action filled.**
- **Tense and well-composed prose**
- **Sense of urgency and danger**

May we send the script?

**We look forward to
working with you.**

**Babz Bitela, Silver Bitela
Agency**

916 412 1387

bbmovieagent@gmail.com

Robert Powers, Writer

757 621 6846

robertcpowers@cox.net