



HOT

An Original Screenplay
By
Robert C. Powers

THRILLER

A young woman is thrown into the cellar of an
abandoned cabin in a remote mountain area.

LOGLINE

In a rural town a vacationing teenage girl is missing, and the Sheriff believes an escaped convict who he thinks killed his daughter is using her to exact revenge.

COVERAGE

A realistic and entertaining thriller with nary a dull moment; a nice change of pace from the usual "damsel in distress" story. The characters are well fleshed out, the writing is tight and efficient and brings out the story's fast pace.



Nolan Pathway (42)

A tough, principled sheriff, weathered face, body of a running back. He's in a political battle in the upcoming election as murders and abductions overwhelm the little town.

SYNOPSIS

Sheriff Nolan Pathway is called to solve a case where the clues seem to point to a former adversary.

Nolan and his wife, Paula, recently lost their daughter, Alicia, killed by a mysterious man who robbed the bank where she worked.

Nolan thinks he knows who did it, MAGUS, a field hand always in trouble, but can't prove it.

Another girl, Julie, goes missing. What's going on?

A teenage girl who dresses too "hot", Mandy, goes on a date with a total stranger and ends up missing.

Nolan struggles between seeking vengeance and bringing justice as the town folks clamber for action.



Mandy is thrown into the cellar of an abandoned cabin in a remote mountain area. She's not about to go down without a fight.



Paula Pathway (38)

Nolan's wife, former country singer, she's fed up with the dangers Nolan faces and wants to leave town and sing again. She mourns the loss of their daughter --



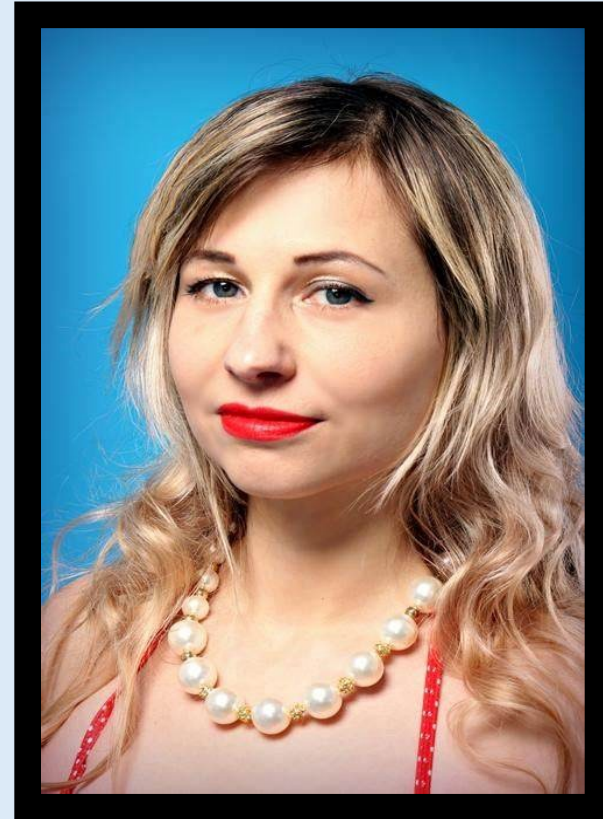
Alicia Pathway (18)

Nolan and Paula's daughter. She is killed when she confronts a bank robber as he runs off into the forest behind the shopping center where she works. Nolan gives chase but the robber escapes.



MAGUS BORG (20)

He's a mentally handicapped field hand who hangs around town, works for different farmers. The girls think he's "cute" until they talk to him. Sheriff Pathway thinks he's the one who robbed the bank and killed Alicia, but can't prove it.

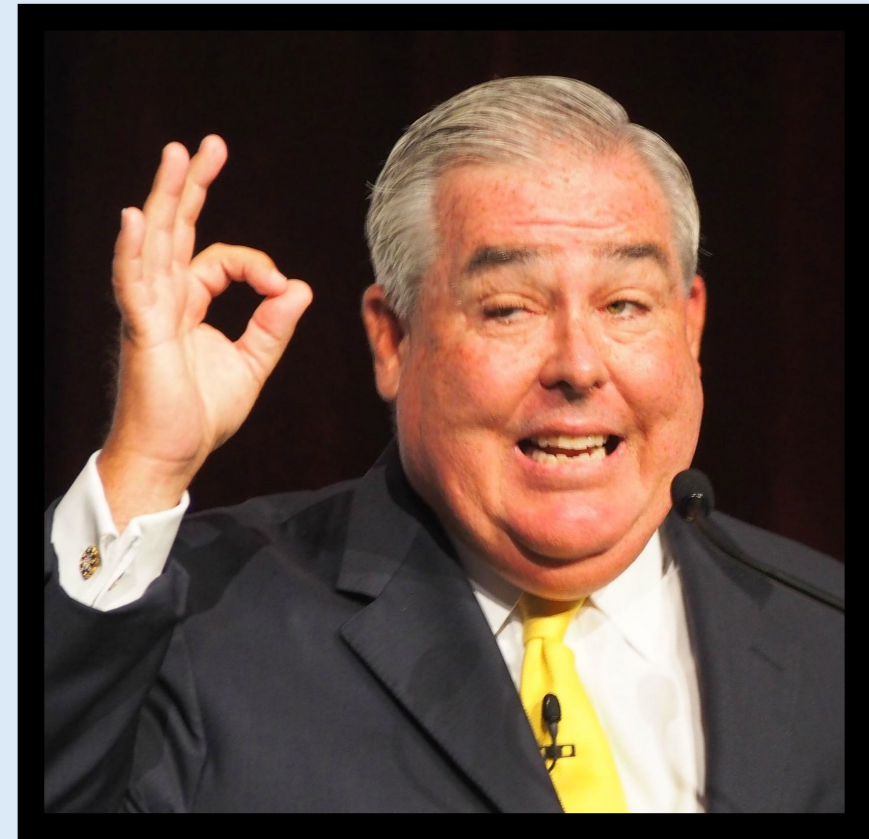


JULIE OLANDER (18)

A sturdy girl -- string of pearls her signature, she works in a department store. MAGUS frequently tries to date her, but is rebuffed. Then, she disappears without a trace.



DEPUTY SHERIFF RUTGER (RUT) HASH (43)
Big and tough, a no-nonsense enforcer of the law. He's plagued with domestic problems. He finds Julie's car with Magus' cigarette butts in it as well as his fingerprints. Arrests Magus --

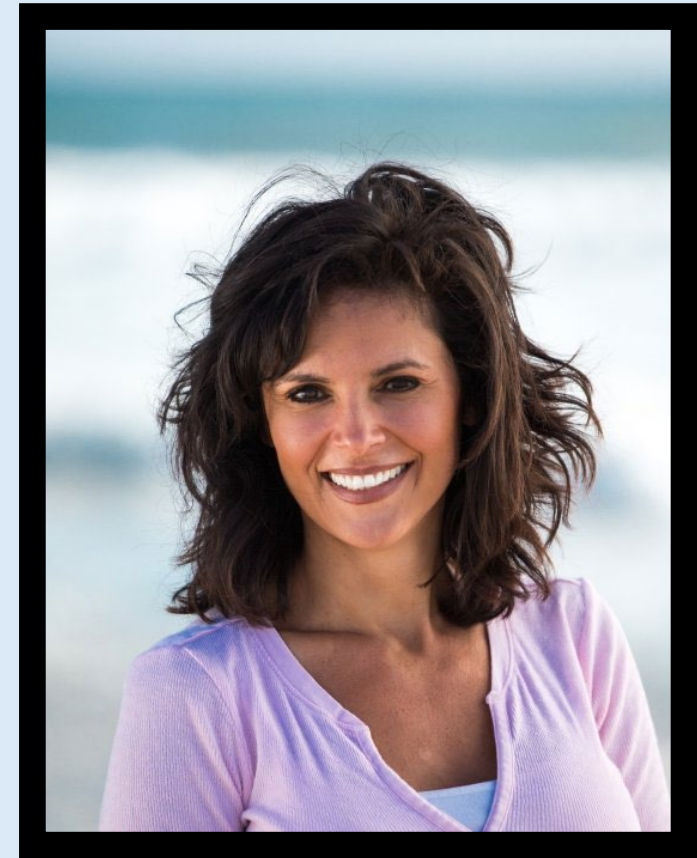


PETER (PUFFY) PRUETT (48),
Smooth-talking lawyer, belly an avalanche, specializes in getting prisoners "off". He and Rut have a confrontation as Puffy declares there's not enough evidence to hold Magus. Magus goes free.



DON MASON (42)

Mandy's Father, a successful businessman, nine to five ordinary, had an affair with a woman not his wife, takes his family to a state park in a fancy RV in hopes of "mending fences".



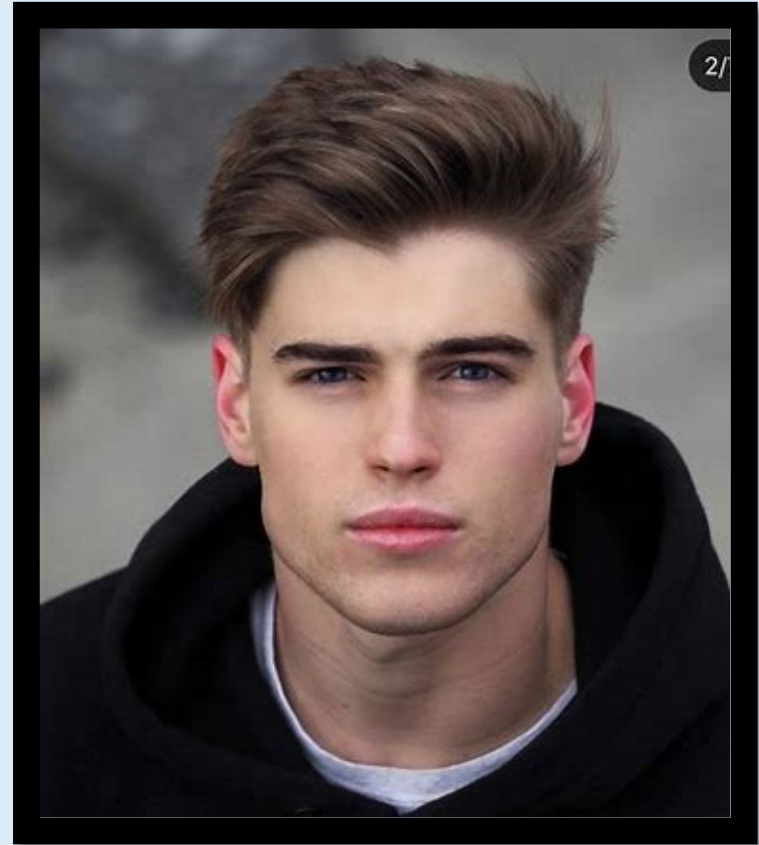
SUSAN MASON (38)

Mandy's mother, a borderline alcoholic and not easy to live with. She tells Don to "give Mandy some slack" and then regrets it when Mandy disappears. She isn't about to give Don any slack over the "other woman".



MANDY MASON (17)

She's a big flirt and dresses "hot". Mandy is bored and fed up with her parents. She meets a handsome and charismatic stranger at the State Park lake and agrees to go to a movie with him.



MYSTERY DATE (19)

Mandy goes on a date with him against the will of her parents. She takes her father's motor bike and rides off with the handsome stranger. She's out for a good time, but it doesn't go as expected -- they both disappear



KENT MASON (16)

Mandy's smart brother, may look like a nerd, but tough. He wants to be a detective and is determined to find and save his sister. He finds a telling clue --



SHERIFF'S OFFICER PERRY BANNISTER (30)

Level-headed, dedicated to law enforcement and built like a tank. Sheriff Pathway at first ignores Kent, but Perry helps to bring him to Nolan's attention, and it pays off --

FINALE

Who has Mandy? Is it Magus?

What really happened?

It's going to come down to who
fights, who blinks and who lights
the match.

And not every burn comes from
flame.



Show-down at an abandoned mill house.

We look forward to working with you.

Barbara Bitela
Silver Bitela Agency
916 412 1387
barbarabitela3@gmail.com

Robert C. Powers
Powerful Publisher LLC
757 621 6846
robertcpowers@cox.net
www.robertcpowers-writer.com

Robert C. Powers Credits

OPTIONED: LASERBLADERS; fantasy.

OPTIONED: HOT; drama/thriller.

QUARTERFINALIST; ALFIE'S CHRISTMAS GIFT, faith-based drama, FAITH IN FILM International Festival

QUARTERFINALIST; DENIAL, thriller, InkTip Pro Screenwriting Contest – Limited Location Scripts.

QUARTERFINALIST; EXTREMIS, drama, ScreenCraft True Story & Public Domain Competition.

QUARTERFINALIST; HOT, drama, Miami Screenplay